

4

3

2

1

D

D

C

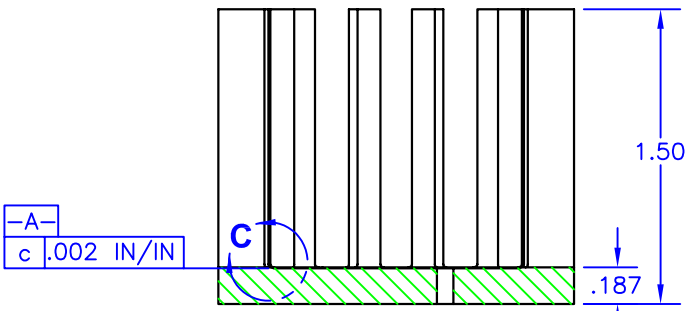
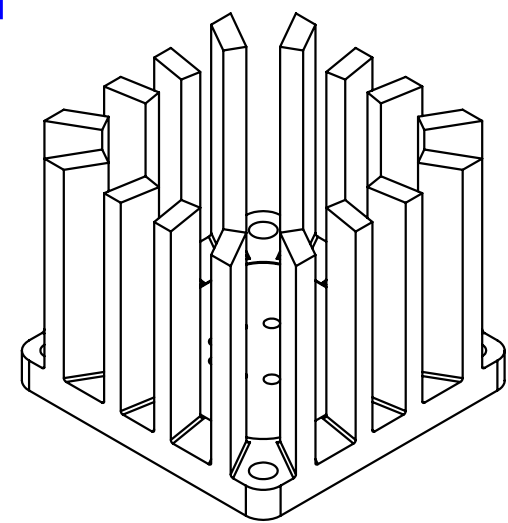
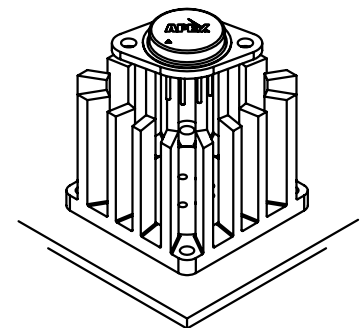
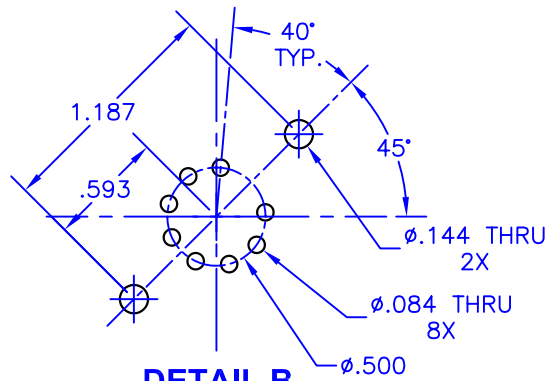
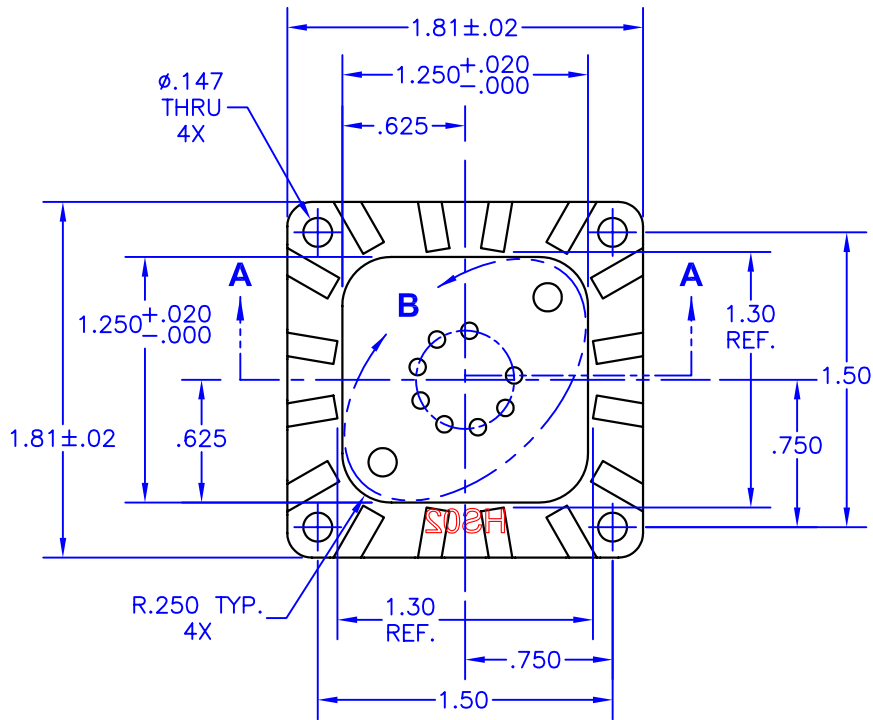
C

B

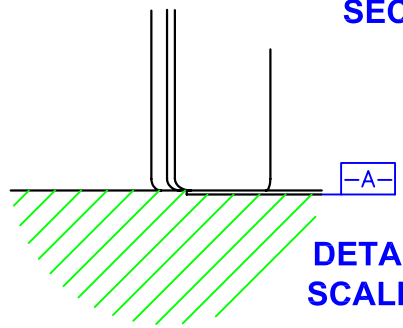
B

A

A



SECTION A-A



DETAIL C SCALE 4:1

NOTES:

1. Unless otherwise noted, all dimensions are in inches.
2. Break all sharp edges, de-burr & remove loose chips.
3. Material: Aluminum (M/F AAVID Thermalloy 5684 stamping blank)
4. Machine 1.25x1.25 area of surface -A- flat to within .002 in/in.
5. Finish: Anodize per MIL-A-8625, Type II, Class 2, Black
Typical breakdown voltage > 300V
6. Mark with contrasting ink as shown, if specified by P.O.
7. Approximate Weight: 1.9 oz [54g]

TOLERANCES - UNLESS OTHERWISE SPECIFIED						TITLE HEATSINK, TO3		PART NO. HS02	
.XX = ±.01	.XXX = ±.005					SUBJECT MECHANICAL DRAWING		FILENAME HS02-J	
ANG. = ±.5°		ENG. D-M	TECH/DWN. D-M	DCA 46411	SH. OF 1 1				

4

3

2

1